



SWASTIK ANANTA
NEAR SAMANYAY SKY VIEW, SATYAMEV HOSPITAL TO TRAGAD ROAD, TRAGAD-382470
📞 99 24 33 11 77 📧 swastikananta@gmail.com

PR/GJ/AHMEDABAD/AHMEDABAD CITY/AHMEDABAD MUNICIPAL CORPORATION/
MAA13966/050824/311227 | WWW.GUJRERA.GUJARAT.GOV.IN



10.11 desiign > 9923113965



2 BHK INFINITY LIVING

LOCATED IN THE GROWING AND
PROMINENT AREA OF CHANDKHEDA,
SWASTIK ANANTA IS CONCEPTUALLY
CURATED 2 BHK HOMES. THIS ABODE ARE
BUILDING TO DELIVER THE EXQUISITE
CLASS OF LIVING THAT INCULCATES THE
TRUE SENSE OF COMFORT

FROM THE GRACE OF SCENIC VIEWS TO
THE GREENS OF LUSCIOUS
SURROUNDINGS, THIS RESIDENCE WILL
ELEVATE YOUR EVERY MOMENT WITH
UTMOST LEISURE

astorishing lifestyle

SWASTIK
ANANTA
2 BHK INFINITY LIVING

AMAZE
YOUR
EVERYDAY
WITH *allure*



DEFINING
LIFESTYLE
WITH
PERFECT
aesthetics



A modern residential building with a courtyard. The courtyard features a waterfall, trees, and people. The building has multiple floors with balconies and a parking area. The scene is set during sunset or sunrise, with a large white 'A' shape in the background.

WHERE EVERY VIEW IS
awe-inspired

B

- LANDSCAPE GARDEN
- SENIOR CITIZEN AREA
- VASTU COMPLIANT DESIGN

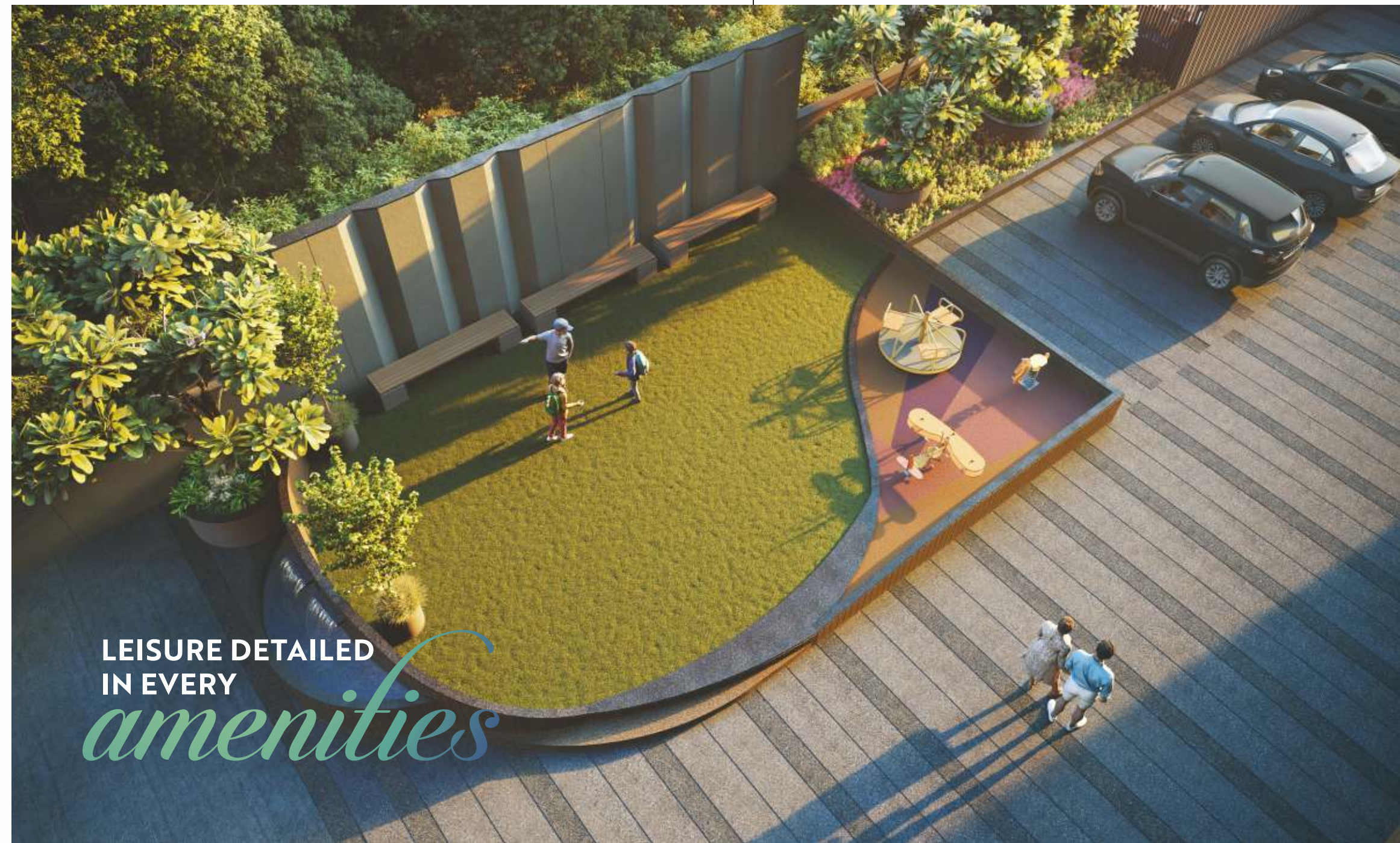
- CHILDREN PLAY AREA
- INDOOR GAMES
- GYM

- YOGA DECK
- INFORMAL SITOUT
- AMPLE PARKING

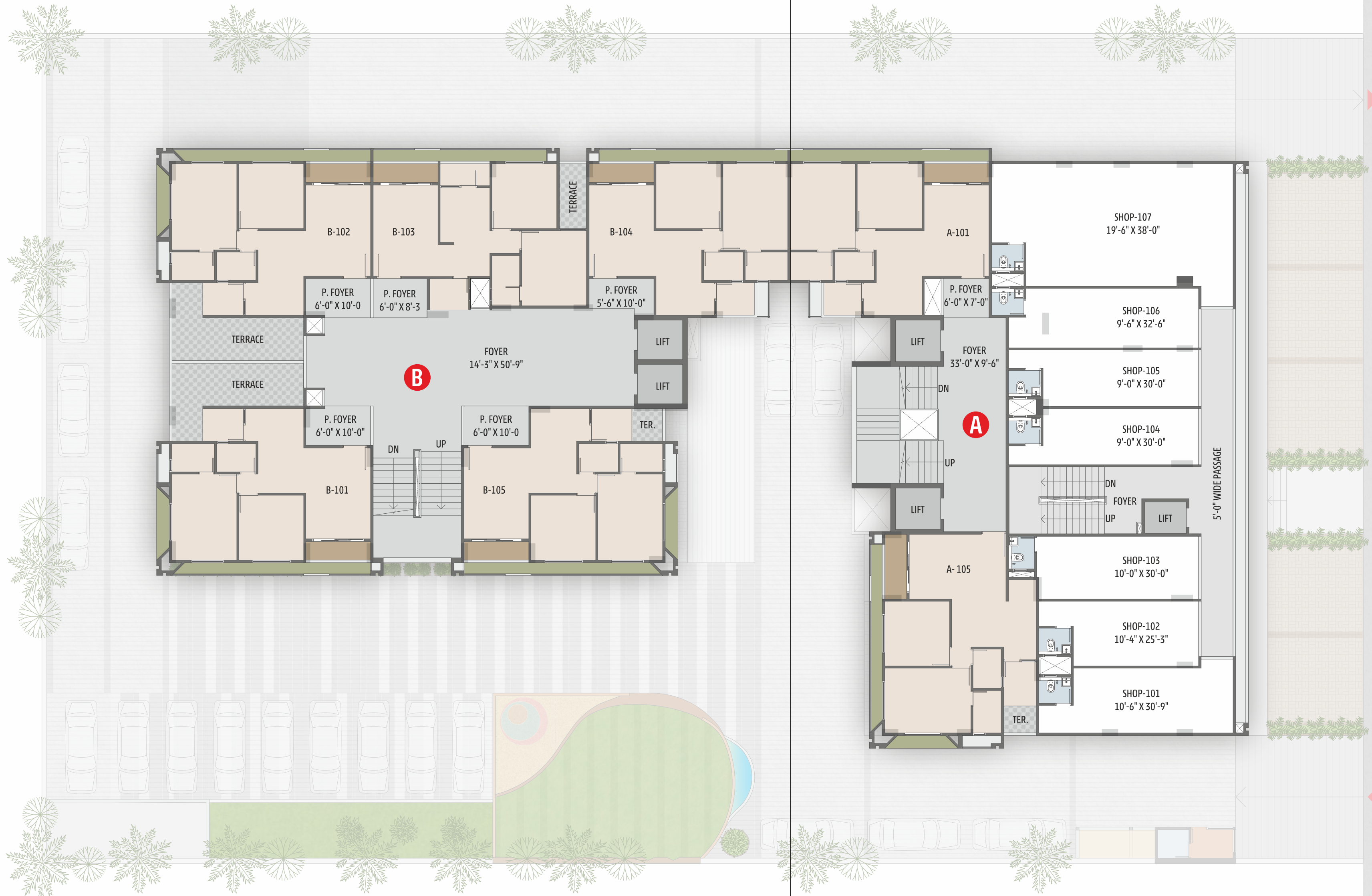
- FIRE SAFETY
- DESIGNED FOYER
- DROP OFF ZONE

- 24 HRS WATER
- CCTV CAMERA
- SECURITY GUARD

- POWER BACKUP
- GAS LINE
- DTH CONNECTION



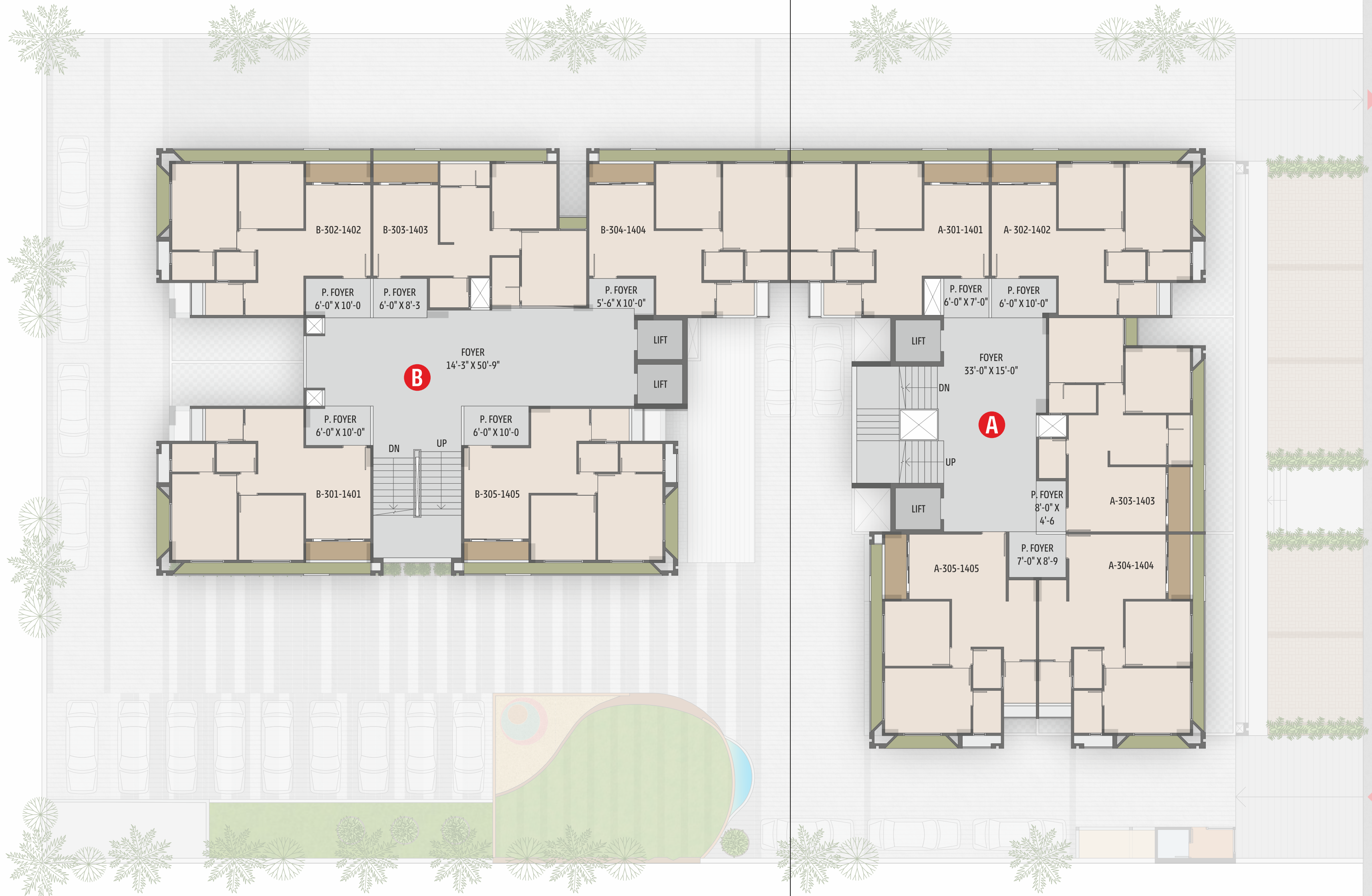




24 MT. WIDE ROAD

FIRST FLOOR



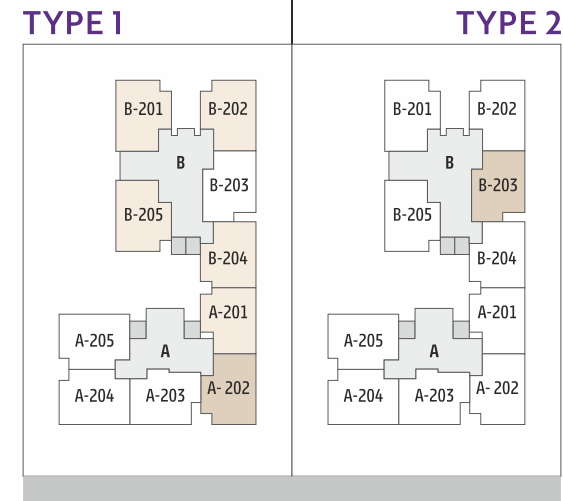


24 MT. WIDE ROAD

TYPICAL FLOOR

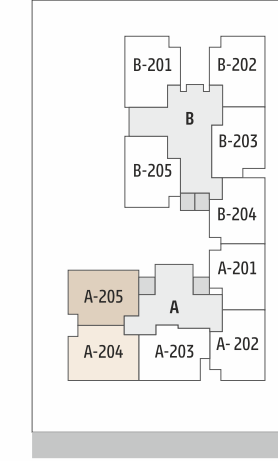


2 BHK

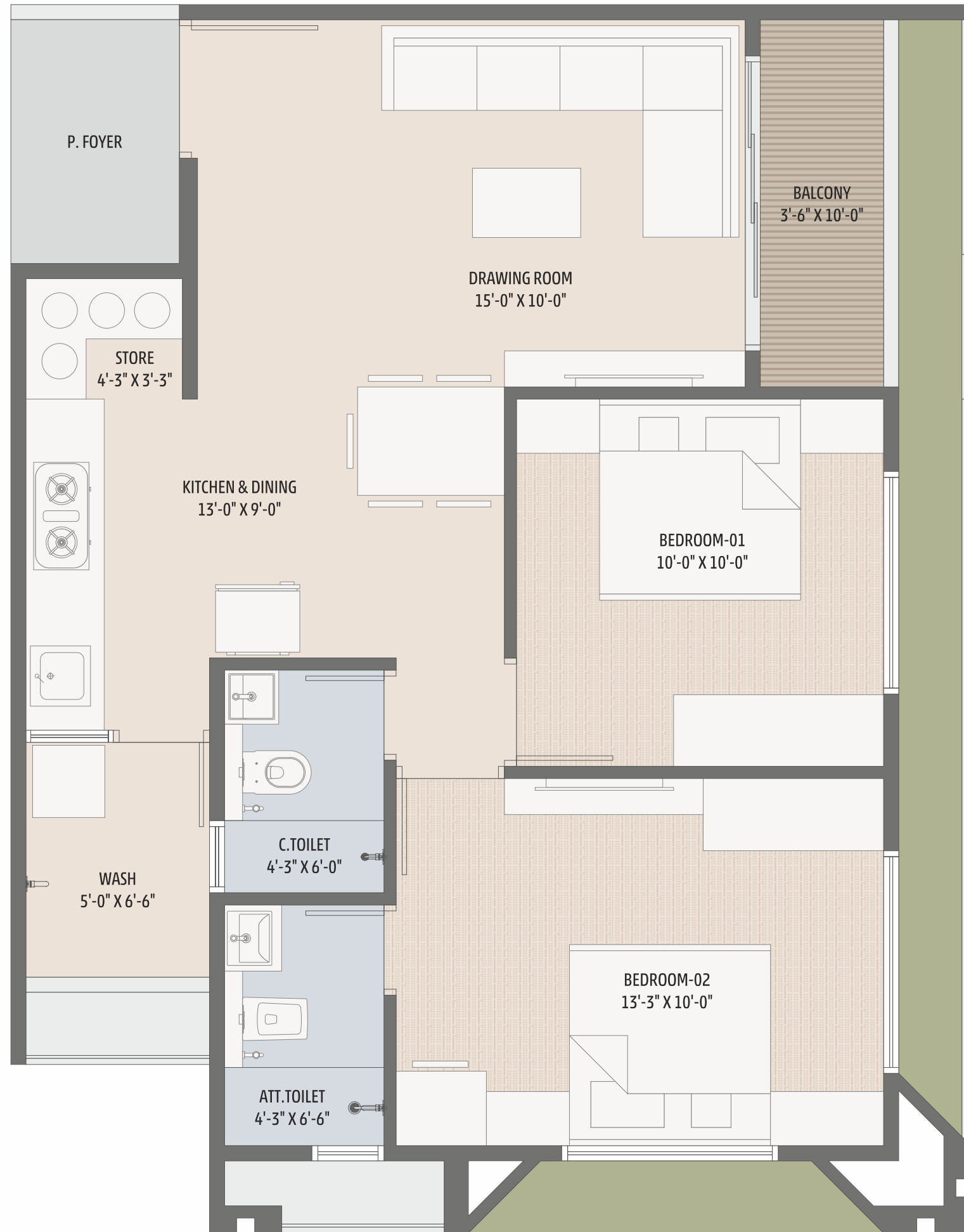
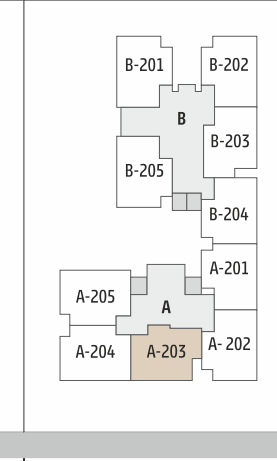


2 BHK

TYPE 3



TYPE 4





specification

WALL FINISH

Internal : Smooth finish mala plaster with putty
External : Double coat sand faced plaster texture finish.

FLOORING

Vitrified tiles flooring in all room.

KITCHEN

Standing polished natural granite kitchen platform with sink & Glazed tiles dado above the platform up to lintel

DOORS

Decorative main door having lock of reputed company.
Internal doors of flush doors.

WINDOWS

Aluminium anodized section sliding windows with glass & stone jambs.

TOILET

Ceramic tiles flooring in all toilets, glazed tiles dado up to lintel level.

PLUMBING

Concealed plumbing of good quality UPVC & CPVC PIPES, C.P. Fittings & Sanitary Ware of reputed brands.

ELECTRIFICATION

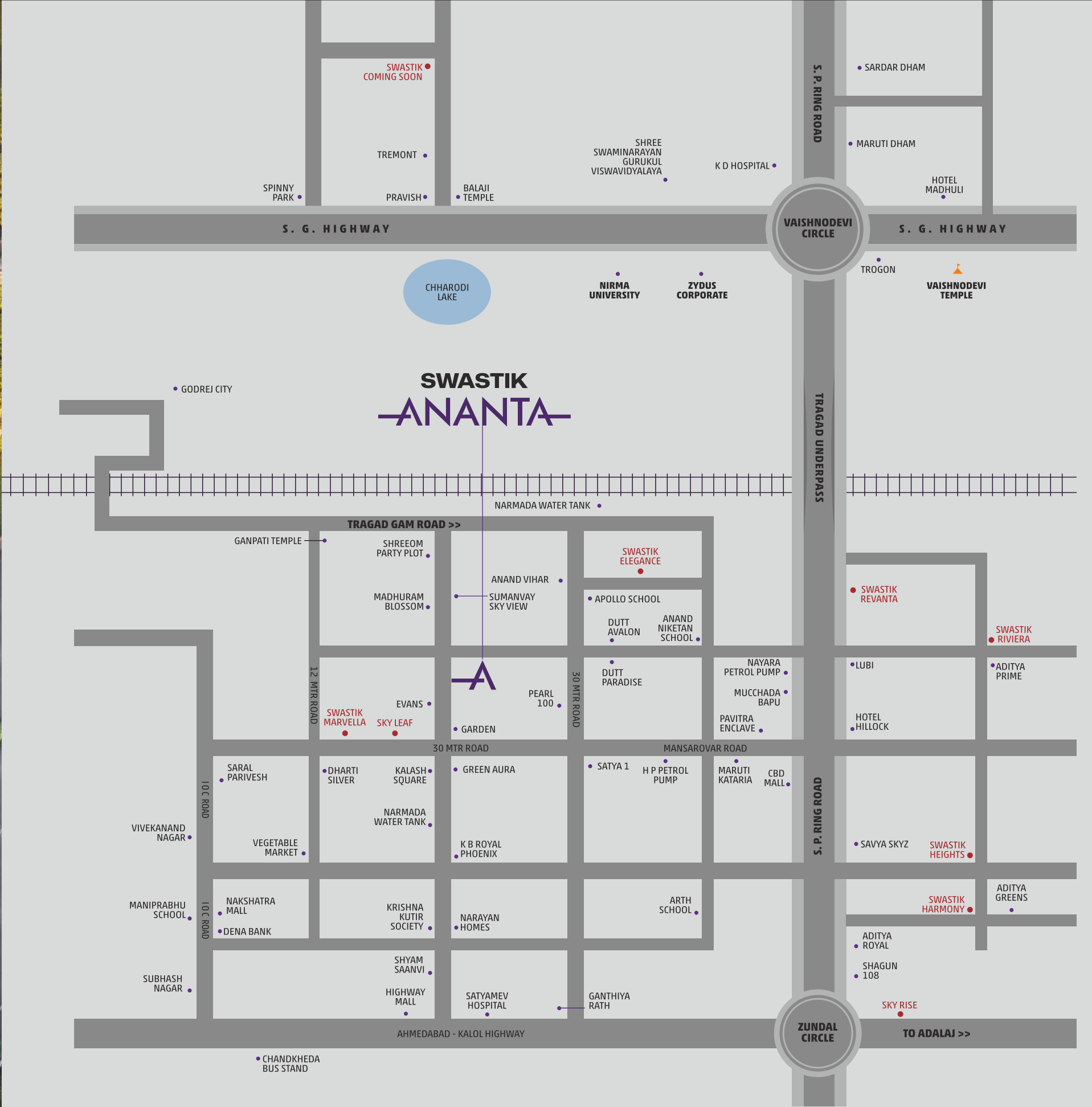
Signal phase meter + MCB & ELCB tripper with concealed wiring with adequate points with quality fittings.

PAINT

Exterior painting of acrylic paint. Internal walls double coat putty finish.

LIFTS

Fine quality fully automatic lifts.



LOCATION QR

RULES & REGULATIONS • Stamp Duty, Registration Charges, Legal Documentation Charges, GST, Maintenance Deposit, Torrent Charges and any other charges shall be borne by buyer separately. • Any Additional charges of duties levied by government / local authority during or after the completion of the project will be borne by the buyer. • Internal changes shall be done with prior permission and shall be charged in advance. • Changes in external elevation shall not be permitted. • All rights reserved by the developer for alteration / modification / improvement in specification / changes in dimensions and planning shall be binding to all. • Business practices leading to pollution, causing material damage to the building or members are not allowed in the premises. • Irregular payments may attract interest or lead to cancellation of booking/s.

DISCLAIMER • This brochure and model are not part of any legal documents. • All dimensions / measurement given are unfinished and approximates. • The photographs & artistic impressions are for references only. Actual building may vary from the representations mentioned in the brochure. • This is not an advertisement within the meaning of RERA. This is not an offer, invitation or commitment of any nature. Receipts are advised to appraise themselves of the necessary and relevant information of the project prior to making any purchase decisions. All the specifications of the flat shall be as per the final agreement between the parties. * Subject To Gandhinagar Jurisdiction • T&C Applicable