

SKYRISE, NR. SANCHI HEIGHTS, OPP. PUNA INTERNATIONAL SCHOOL,  
A'BAD - ADALAJ ROAD, ZUNDAL, GANDHINAGAR - 382421

☎ 84810 08200 ✉ skyrise198@gmail.com

PROJECT BY

ARCHITECT

STRUCTURE CONSULTANCY

**GARDANIA**  
INFRABUILD LLP



**Amees Associates**  
STRUCTURAL CONSULTANT

RERA: PR/GJ/GANDHINAGAR/GANDHINAGAR/Others/MAA11987/200623  
WWW.GUJRERAR1.GUJARAT.GOV.IN

10.11 desi gn > 992513805



# SKYRISE

**ELEVATE  
YOUR  
LIFESTYLE  
WITH  
SKY-HIGH  
LIVING!**

### 3 BHK SKY LIVING

Experience the epitome of luxury and convenience in our Sky-Rise residences, where exceptional connectivity and superior quality living seamlessly merge.

Experience the perfect blend of connectivity and quality living in our Sky-Rise residences.

Elevate your lifestyle and relish a harmonious balance between modern connectivity and luxurious living like never before.



SKYRISE





# SKYRISE

DISCOVER THE  
ULTIMATE HEIGHTS  
OF ELEGANCE AND  
COMFORT!

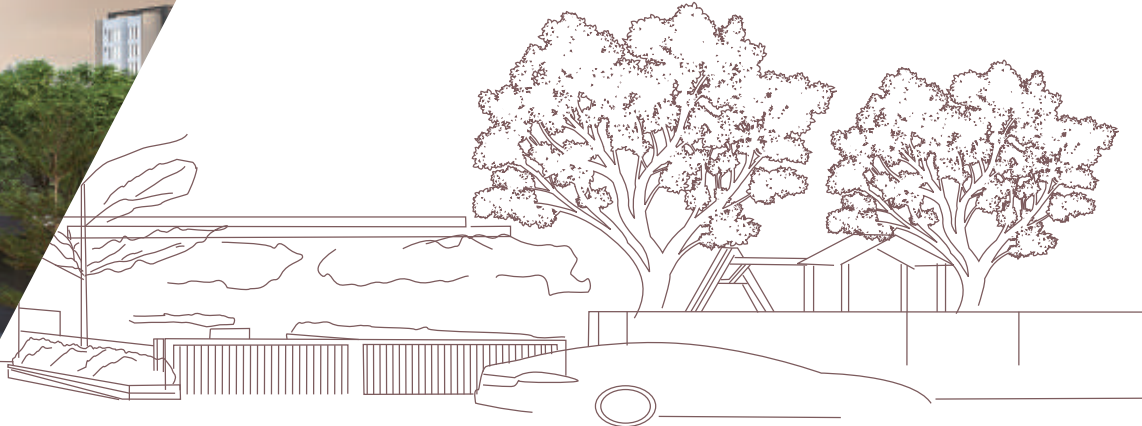






# SKYRISE

ELEVATE YOUR  
EXPECTATIONS,  
EXPERIENCE  
SKY-HIGH LIVING!





## STEP UP AND ELEVATE YOUR LIFESTYLE!



CLUB HOUSE



LANDSCAPE GARDEN



SENIOR CITIZEN AREA



GYM



CHILDREN PLAY AREA



GAZEBO



WELL DEVELOPED TERRACE



INFORMAL SITOUT



INDOOR GAMES



VASTU COMPLIANT DESIGN



DROP OFF ZONE



CCTV CAMERA



WELL DESIGNED ENTRANCE FOYER



2 LAYER ALLOTTED CAR PARKING



SECURITY 24X7



GAS LINE



POWER BACKUP FOR COMMON AREA



AUTOMATIC LIFT



SOLAR SYSTEM



DTH CONNECTION



24 HRS WATER



FIRE SAFETY







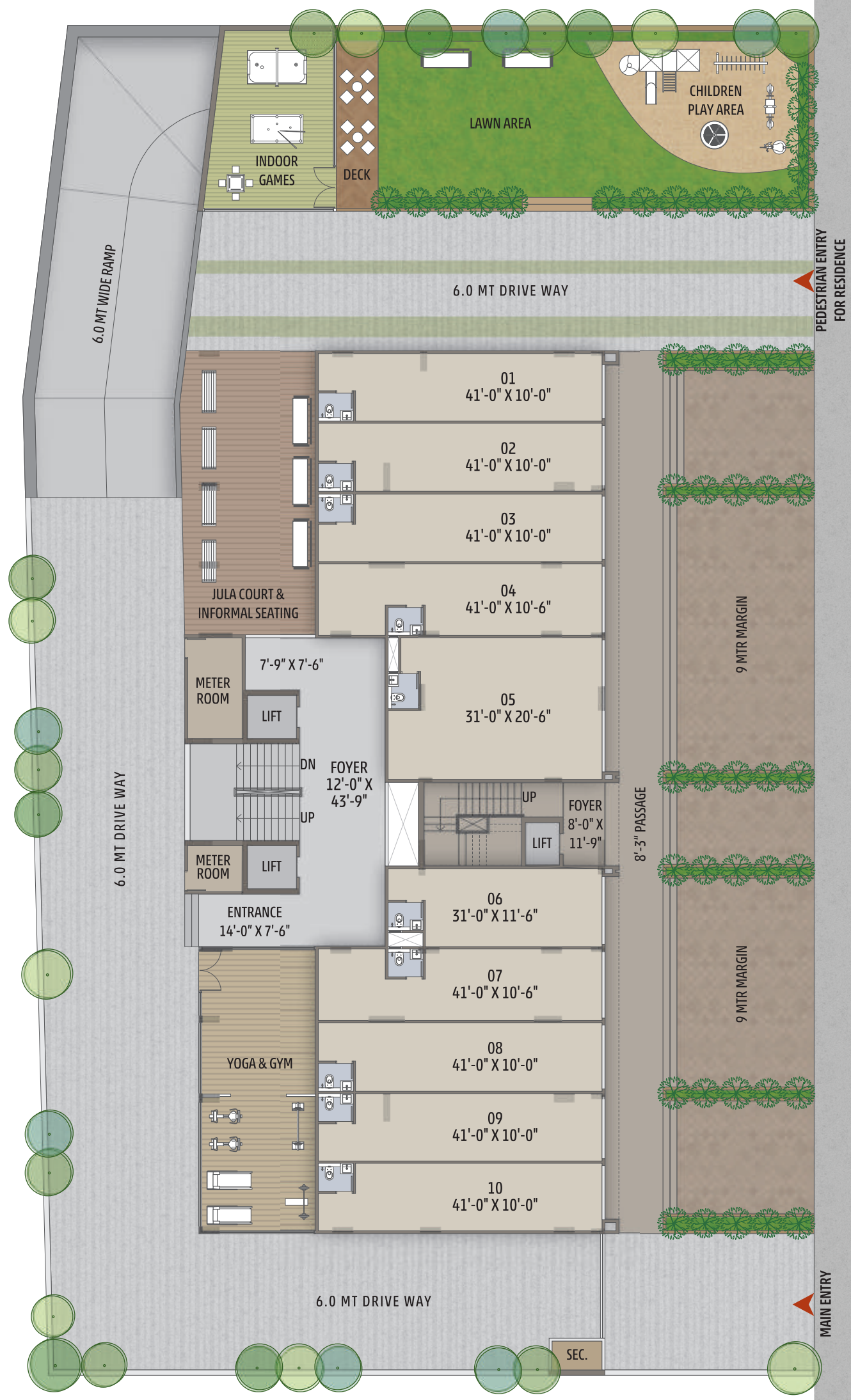
## RISE ABOVE THE ORDINARY, EMBRACE EXTRAORDINARY LIVING

Our Sky-Rise residences are thoughtfully designed to provide an unparalleled living experience, offering a wide range of amenities that cater to your comfort, convenience and enjoyment. Here are some of the exceptional amenities you can expect in our Sky-Rise properties





**GROUND FLOOR**



**FIRST FLOOR**



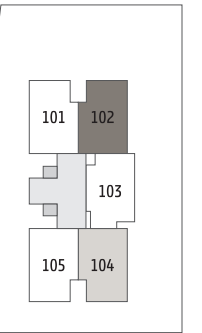




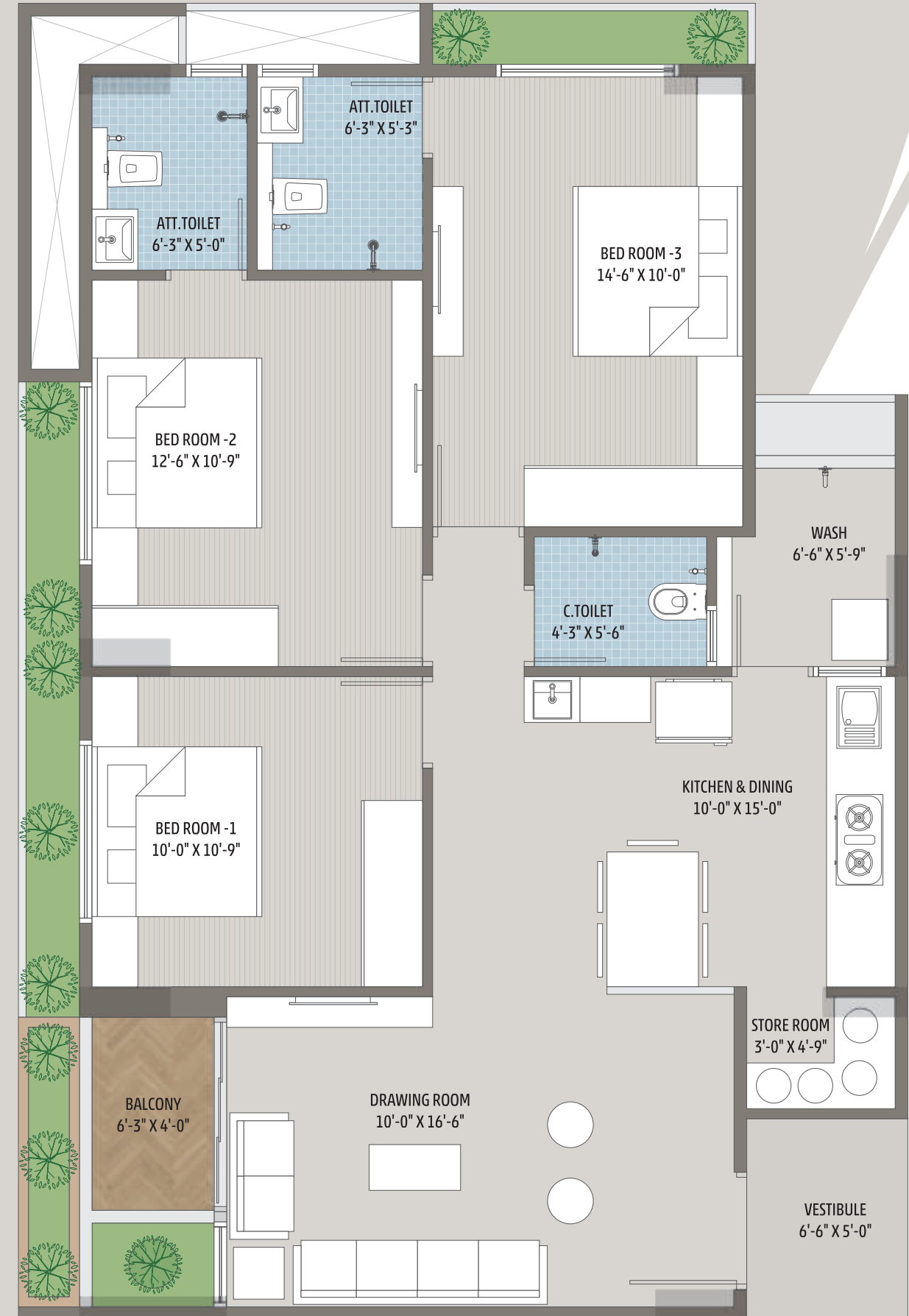
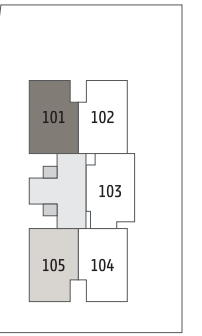
RISE ABOVE THE ORDINARY,  
EMBRACE EXTRAORDINARY LIVING



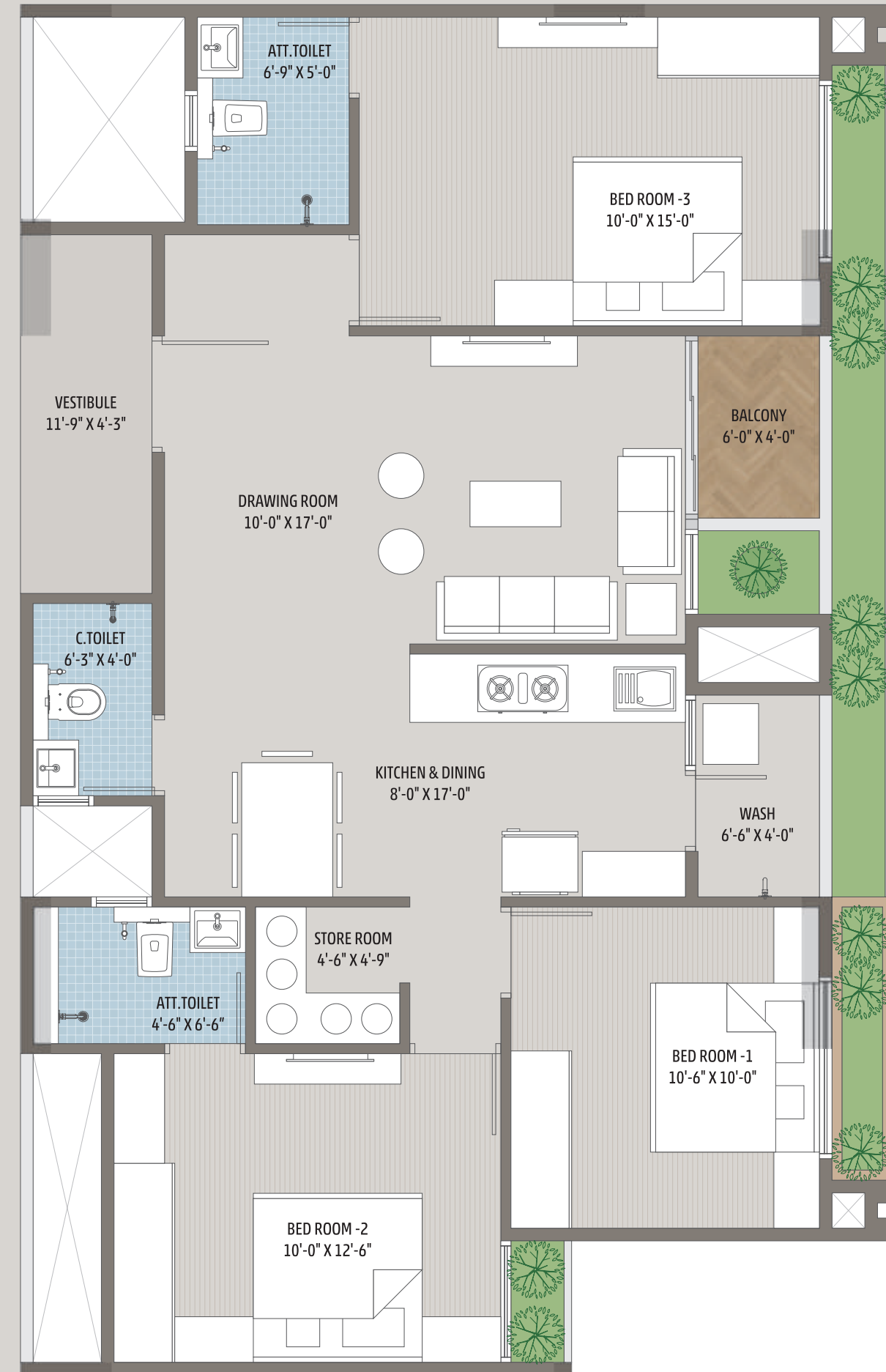
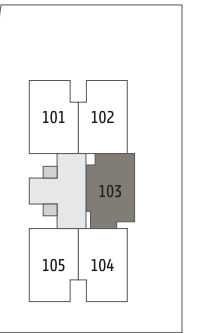














**ELEVATE  
YOUR LIFESTYLE  
WITH SKY-HIGH  
LIVING!**



## SPECIFICATIONS

### STRUCTURE

- Earthquake resistant R.C.C. frame structure as per structural engineer's design

### FLOORING

- Vitrified tiles flooring in all rooms

### KITCHEN

- Granite platform with S.S. sink
- Glazed tiles dado up to lintel level
  - Provision for R.O. point with required electrical & plumbing point

### BATHROOMS/TOILET

- Anti-skid flooring
- Glazed tiles dado up to lintel level
  - Branded sanitary ware fittings

### DOORS & WINDOWS

- Wooden door frame with decorative main door, all other flush door with ss fitting

### WASH AREA

- Anti-skid flooring
- Provision for washing machine with electrical and plumbing point

### ELECTRIFICATION

- Concealed copper wiring with M.C.B / E.L.C.B.
- Branded modular switches with sufficient electrical points in all rooms
  - Electrical point for A.C. in master bedrooms

### PLUMBING

- Branded U.P.V.C. pipes for regular water supply
- Branded C.P.V.C. pipes for hot water supply
- Branded P.V.C pipe for drain

### FITTING

- Concealed plumbing fitting with standard quality bath fitting and sanitary ware

### TERRACE

- Open terrace with water proof treatment

### PLASTER & PAINTS

- **INSIDE** : Single coat mala plaster with wall putty finish
- **OUTSIDE** : Double coat mala plaster with exterior paint for attractive elevation





# SKYRISE

## 3 BHK SKY LIVING



SCAN FOR LOCATION

**RULES & REGULATIONS** • Stamp Duty, Registration Charges, Legal Documentation Charges, GST, Maintenance Deposit, Torrent Charges and any other charges shall be borne by buyer separately. • Any Additional charges of duties levied by government / local authority during or after the completion of the project will be borne by the buyer. • Internal changes shall be done with prior permission and shall be charged in advance. • Changes in external elevation shall not be permitted. • All rights reserved by the developer for alteration / modification / improvement in specification / changes in dimensions and planning shall be binding to all. • Business practices leading to pollution, causing material damage to the building or members are not allowed in the premises. • Irregular payments may attract interest or lead to cancellation of booking/s.

**DISCLAIMER** • This brochure and model are not part of any legal documents. • All dimensions / measurement given are unfinished and approximates. • The photographs & artistic impressions are for references only. Actual building may vary from the representations mentioned in the brochure. • This is not an advertisement within the meaning of RERA. This is not an offer, invitation or commitment of any nature. Recipients are advised to appraise themselves of the necessary and relevant information of the project prior to making any purchase decisions. All the specifications of the flat shall be as per the final agreement between the parties. • Subject To Gandhinagar Jurisdiction • T&C Applicable\*